



INSTRUCTION MANUAL  
THRIVE HD REFLEX SIGHT

ZEROTECH REFLEX SIGHT OPTICS

THRIVE HD  
THDRS28, THDRS28G, THDRS28M

## **WARNING**

**KEEP BATTERIES OUT OF REACH OF CHILDREN**



**THIS PRODUCT CONTAINS A COIN BATTERY.  
THE BATTERY CAN CAUSE SEVERE OR FATAL INJURIES IN  
2 HOURS OR LESS IF IT IS SWALLOWED OR PLACED  
INSIDE ANY PART OF THE BODY.**

# CONTENTS

## PAGES

- 4** INTRODUCTION
- 5** LIFETIME WARRANTY
- 6** THRIVE HD REFLEX SIGHT FEATURES
- 8** BATTERY INSTALLATION
- 9** FUNCTIONS - THDRS28 & THDRS28G MODELS
- 10** FUNCTIONS - THDRS28M MULTI RETICLE MODEL
- 11** FITTING THE THRIVE HD REFLEX SIGHT TO YOUR FIREARM
- 13** PICATINNY RAIL FITMENT
- 15** WINDAGE & ELEVATION ADJUSTMENTS
- 16** PROPER CARE OF YOUR TRACE REFLEX SIGHT
- 17** WARRANTY & CONTACT INFORMATION

# INTRODUCTION

## WELCOME TO THE ZEROTECH FAMILY!

**Customer First** - We listened to you and came up with a family of optics that will satisfy the needs of our most discerning and experienced customers.

**Backed by Experience** - ZeroTech enjoys 60 years of experience in the Optics Market supplying high quality brands to retailers throughout Australia and the Asia Pacific.

**Built for the Australian Shooter** - Designed and built to endure the harsh conditions of the Australian bush and the exacting demands of the precision shooter.

**Lifetime Warranty** - Be safe in the knowledge that your scope is backed by our Triple A Lifetime Warranty: **'ANY OWNER, ANY PROBLEM, ALWAYS COVERED'**

# LIFETIME WARRANTY

## BACKED FOR LIFE!

Be safe in the knowledge that your scope is backed by our **Triple A Lifetime Warranty\***:

- Fully transferable, covers accidental damage as well as defects in materials and workmanship.
- No receipt or warranty card is required.
- We will repair or replace product with equal or similar value and/or specifications.
- We will return product to you at no charge.

\*ZT AAA warranty does not cover any intentional loss or damage to ZeroTech products.



**LIFETIME WARRANTY**

**'ANY OWNER, ANY PROBLEM,  
ALWAYS COVERED'**

# THRIVE HD REFLEX SIGHT - FEATURES



THDRS28H High Rise

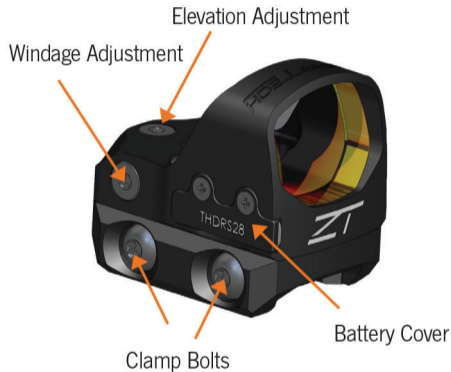


THDRS28L Low Mount For  
Picatinny Rail Fitment



Moulded Rubber Cover

# THRIVE HD MICRO REFLEX SIGHT - FEATURES



# BATTERY INSTALLATION

1. Loosen the two (2) t6 torx screws and slide the battery cover retainer assembly away from the reflex sight.
2. Remove the CR2032 battery and discard the plastic insulator. Install the battery directly into the sight with the positive terminal facing up.
3. Refit the battery cover retainer assembly. A small amount of pressure will be required to clip the battery cradle over the battery.
4. Refit the two (2) t6 torx screws and tighten to 6 in lbs.  
Be careful not to overtighten these screws.

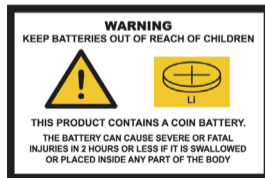
**NOTE:** *Remove and discard the plastic insulator from the battery*

**WARNING – KEEP BATTERIES** (whether the battery is new or used) **OUT OF REACH OF CHILDREN**

Zerotech rifle scopes and optics with a reticle illumination feature contain coin batteries.

Products containing coin batteries must be kept out of reach of children.

The battery can cause severe or fatal injuries in 2 hours or less if it is swallowed or placed inside any part of the body. If you suspect your child has swallowed or inserted a button battery immediately call the **24-hour Poisons Information Centre on 13 11 26 (Australia)** for fast, expert advice.



# FUNCTIONS - THDRS28 & THDRS28G MODELS

- ▲ To activate the THDRS28 reflex sight, briefly depress either of the illumination brightness control buttons.
- ▲ Use either of the illumination brightness control buttons adjust the brightness settings. There is a total of 11 illumination brightness settings.
- ▲ The THDRS28 reflex sight has an auto sleep/ auto activate function. If the sight is left undisturbed for 3 ½ minutes, it will automatically enter sleep mode. As soon as the sight detects motion, it will resume the previously selected brightness setting.
- ▲ To shutdown the THDRS28 reflex sight, hold either of the illumination brightness control buttons for two (2) seconds. You will need to active the sight by briefly pressing the button again before the next use.
- ▲ Zerotech recommends shutting down your sight when in storage.

## FUNCTIONS - THDRS28M MULTI RETICLE MODEL ONLY

- ▲ To activate the THDRS28M Multi Reticle reflex sight, briefly depress either of the illumination brightness control buttons.
- ▲ Use either of the illumination brightness control buttons adjust the brightness settings. There is a total of 11 illumination brightness settings.
- ▲ Multi reticle function – To toggle between the three (3) reticle options, press and hold the - button for approximately two (2) seconds until the reticle pattern changes.
- ▲ The THDRS28 multi reticle reflex sight has an auto sleep/ auto activate function. If the sight is left undisturbed for approximately 3 ½ minutes, it will automatically enter sleep mode. As soon as the sight detects motion, it will resume the previously selected brightness setting.
- ▲ To shut down the THDRS28 reflex sight, press and hold the + button for two (2) seconds. You will need to active the sight by briefly pressing the button again before the next use.
- ▲ Zerotech recommends shutting down your sight when in storage.

# FITTING THE THDRS28 TO YOUR FIREARM

**!! Before mounting your scope to a firearm, it is essential that you confirm that your firearm is unloaded and no ammunition is present in your workspace.**

**To avoid damage and to preserve your warranty, your scope should always be mounted by an experienced professional.**

# FITTING THE THDRS28 TO YOUR FIREARM

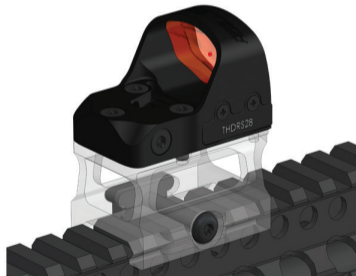
There are several possible ways to mount your THRIVE HD reflex sight to your firearm.

1. **Picatinny rail** – The THRIVE HD reflex sight comes fitted with either a low or high mount to enable the sight to be fitted directly to a picatinny rail. This mounting option is most likely to be used with a rifle, however certain shotguns and revolvers can also be fitted with a picatinny rail.
2. **Direct mount** – Some pistols are available with pre inlet slides which will enable the THRIVE HD reflex to fit directly to your pistol. In this case, the picatinny mount can be completely removed and set aside.
3. **Aftermarket mounts** – Like the direct mount for pistols, aftermarket mounts are available to enable a wide variety of mounting options. These can enable the THRIVE HD reflex to be mounted on top of a rifle scope, on a 45 degree offset on an AR or even enable mounting on a spotting scope. We recommend talking to your local store to discuss these options and many more.

# PICATINNY RAIL FITMENT

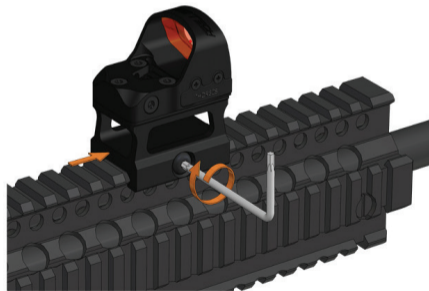
**The THRIVE HD reflex sight is supplied with a high or low mount to enable it to be fitted to a picatinny rail.**

- ▲ Before attempting to fit to your firearm, use a T15 Torx key to loosen the clamp bolt(s) slightly to enable adequate clearance of the clamp so it can fit over the picatinny rail.
- ▲ Once you have achieved your desired position on the rail, apply slight forward pressure to the sight (push towards the muzzle) and tighten the T15 Torx clamp bolt(s).



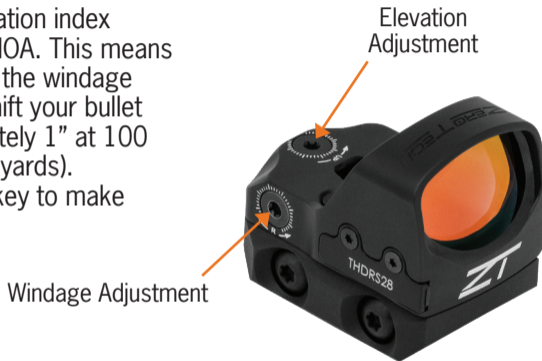
# PICATINNY RAIL FITMENT

- ▲ It is recommended to use a torque wrench to achieve approximately 30 in lbs of tension on the clamp bolt(s).
- ▲ It is recommended to check the torque settings on the clamp bolts periodically.
- ▲ If you wish to apply a thread locking compound to the clamp screws, it is recommended to use a non-permanent compound such as Loctite 222.



# WINDAGE AND ELEVATION ADJUSTMENTS

- ▲ Windage and elevation index (click) value is 1 MOA. This means that each click on the windage or elevation will shift your bullet impact approximately 1" at 100 yards (1/2" at 50 yards).
- ▲ Use a T10 TORX key to make adjustments.



## PROPER CARE OF YOUR THRIVE HD MICRO REFLEX SIGHT

- ▲ **ALWAYS** wipe fingerprints from the lenses using only the Zerotech lens cloth provided. Do not use other materials to wipe the lens as this may result in damage to the lens coatings. If debris is present on the lens, use a lens brush to remove the debris before wiping with a lens cloth.
- ▲ **ALWAYS** check the mount interface is tight after each shooting session.
- ▲ **AVOID** solvents and cleaner sprays coming into contact with your sight. If you accidentally spray solvent or cleaner onto your sight, wipe off immediately.

**AVOID** storing your sight for long periods with the battery installed. Always remove the battery for long term storage. Ensure the battery is stored responsibly and out of reach of children. Refer to battery warning information.

# WARRANTY & CONTACT INFORMATION

Company details;

## ZEROTECH INTERNATIONAL PTY LTD

For all enquiries:

### AUSTRALIA / INTERNATIONAL

**Ph:** +612 9938 3244

**Email:** [sales@zerotech.com.au](mailto:sales@zerotech.com.au)

**Web:** [zerotech.com.au/warranty](http://zerotech.com.au/warranty)

**Address:**

PO BOX 7200,

Warringah Mall

NSW, 2100, AUSTRALIA

### USA

**Ph:** 615-674-4755

**Email:** [sales@zerotechoptics.com](mailto:sales@zerotechoptics.com)

**Web:** [zerotechoptics.com/warranty](http://zerotechoptics.com/warranty)

# SEE OUR RANGE OF RIFLESCOPES!

Visit our websites to see the full range of riflescopes:

THRIVE

THRIVE HD

TRACE

TRACE ADV



**Australia:** [zerotech.com.au/riflescopes](http://zerotech.com.au/riflescopes)

**USA:** [zerotechoptics.com/riflescopes](http://zerotechoptics.com/riflescopes)

# NOTES



[zerotech.com.au](http://zerotech.com.au) / [zerotechoptics.com](http://zerotechoptics.com)





LIFETIME WARRANTY

'ANY OWNER, ANY PROBLEM, ALWAYS COVERED'

[zerotech.com.au](http://zerotech.com.au) / [zerotechoptics.com](http://zerotechoptics.com)

